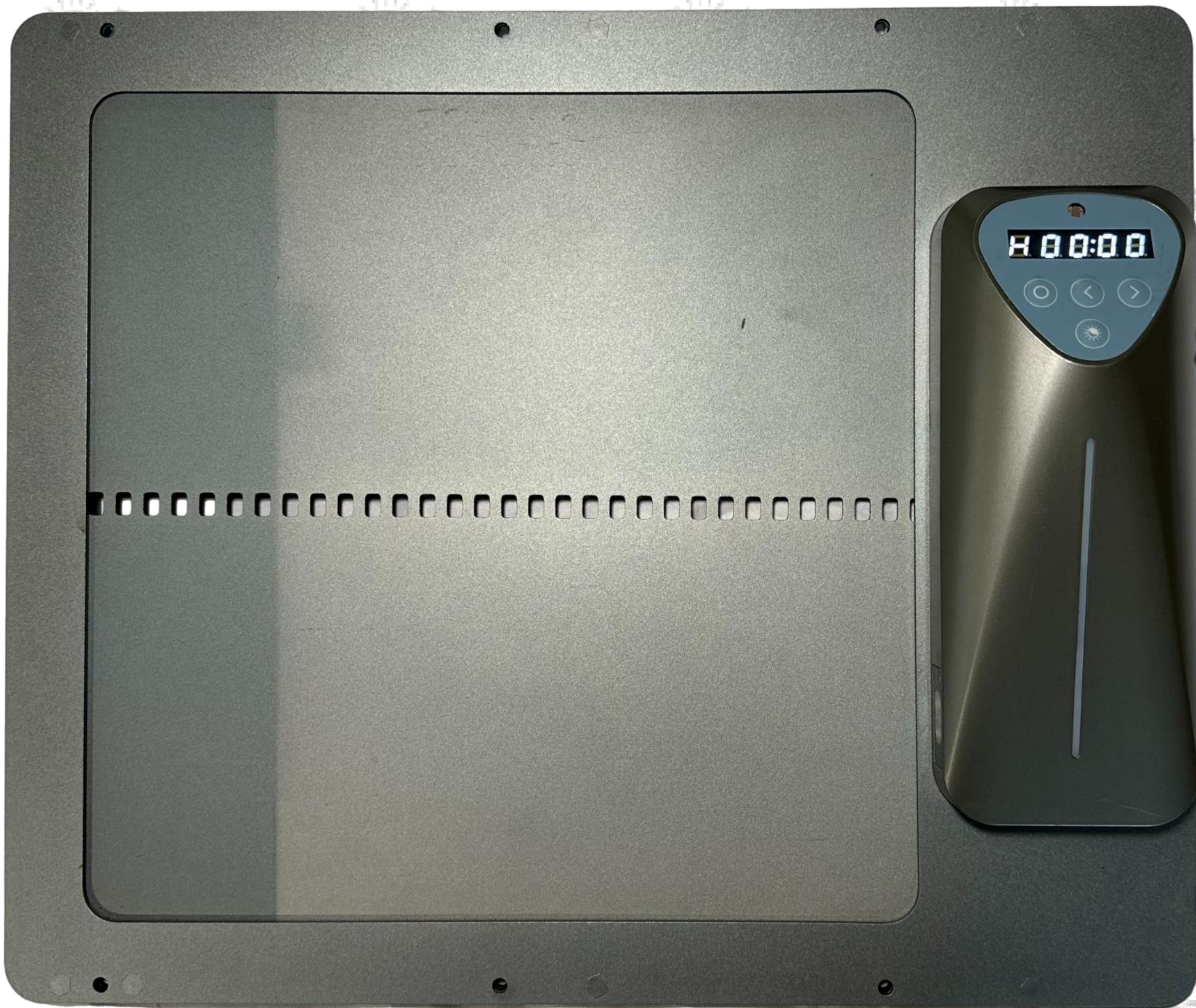


# Automatic Chicken Coop Door



**FARMLITE**  
MAKING HOMESTEADING EASY



## Owner's Manual & Product Guide



# Table of Contents

Welcome & Package Contents.....	Page 1
Video Instructions.....	Page 2
Warnings & Cautions.....	Page 3
Product Introduction Figure.....	Page 4
Installation Introduction Figure.....	Page 5
Control Panel Introduction Figure.....	Page 6
Specifications.....	Page 7
General Introduction & Setup.....	Page 8-9
Utilizing the Remote Control.....	Page 10
Programming the Chicken Coop Door.....	Page 11-12
Maintenance/Troubleshooting.....	Page 13
FAQ.....	Page 14
Warranty.....	Page 15

## IMPORTANT

1. DO NOT OVERTIGHTEN INSTALLATION SCREWS OR FRAME CAN COMPRESS AND BURN MOTOR OUT.
2. ENSURE DOOR IS INSTALLED ON FLAT FLUSH SURFACE, IF NOT THE DOOR FRAME CAN BEND AND WILL STOP WORKING
3. HOLD THE POWER BUTTON(CIRCLE) ON THE REMOTE FOR 2 SECONDS TO WAKE THE DOOR UP, THEN PRESS OPEN/CLOSE ON REMOTE
4. REMOVE PLASTIC FILM FROM THE MOTION SENSOR ON LEFT SIDE OF HEAD OF THE DOOR

# FarmLite

Thanks for your purchase of the FarmLite Automatic Chicken Coop Door! We are an American owned business that truly cares about providing you with a great product and service!

Please review, read and understand ALL instructions and information to ensure proper functionality.

If you have any questions or concerns, don't hesitate to reach out to us, **we are always available to help** at **Hello@FarmLite.Store**

See **Full Video Instructions** at **www.farmlite.store**

## Package Contents

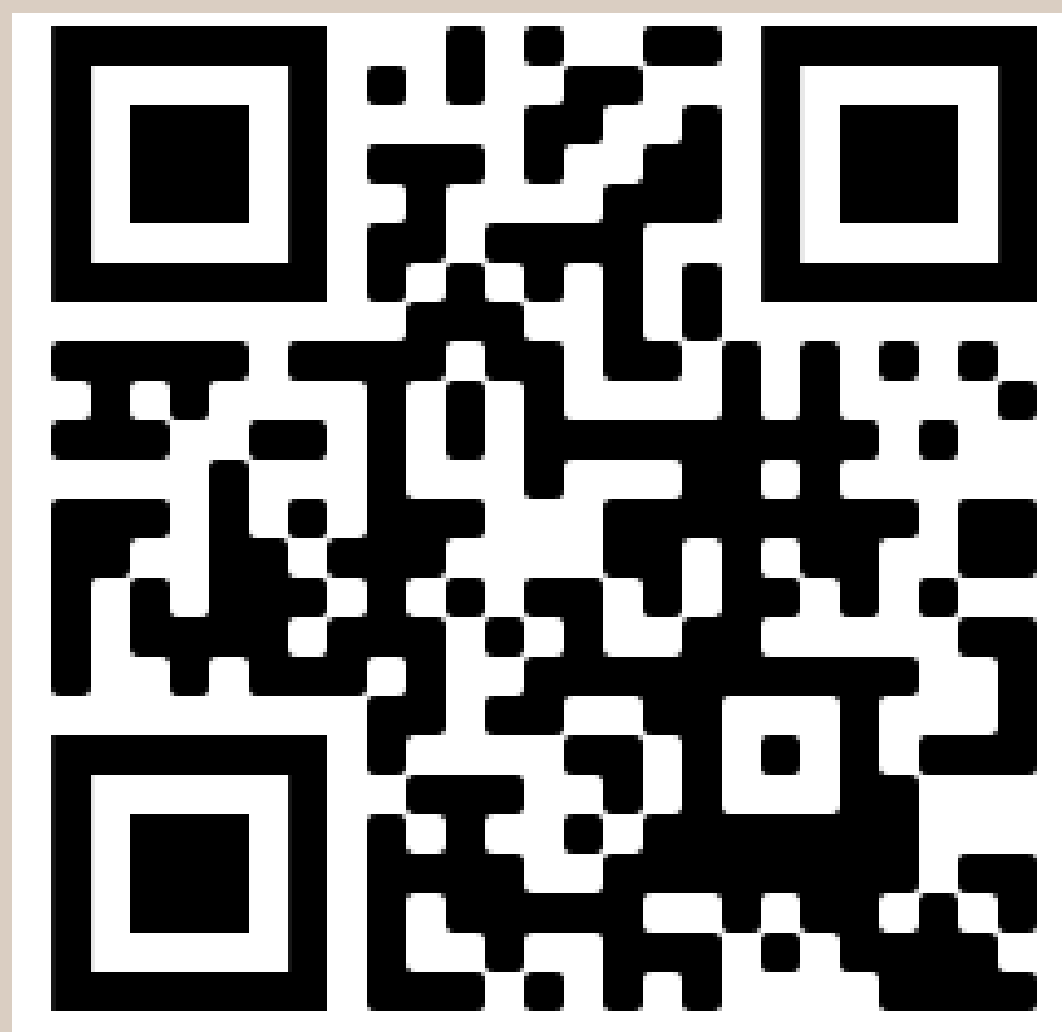
- » **1x** Automatic Chicken Coop Door with Infrared Sensor
- » **1x** Wireless Remote Control
- » **1x** AC/DC Battery Charger
- » **1x** 3W Solar Panel
- » **1x** Solar Panel Mount
- » **3x** Solar Panel Mount Screws
- » **8x** Self-tapping Screw
- » **1x** Owner's Manual

# Full Walkthrough Video Instructions

Don't want to READ all the instructions but still want to learn how to use this automatic chicken coop door? We got your back!

- ✓ Simply scan the QR Code with your smart phone camera. It will take you to the official FarmLite website.

*Scan me*



OR  
**[www.farmlite.store](http://www.farmlite.store)**



# Warnings & Cautions

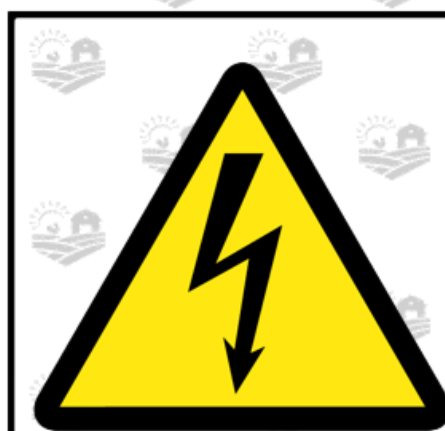
- » To reduce risk of electric shock, do not disassemble this product. Contact **FarmLite** for any maintenance issues.
- » Use the AC/DC power battery charging cable provided with the unit. The use of other cables can result in shock, fire or cause damage to the unit..
- » Ensure the unit is connected to the power source properly.
- » Only use the AC/DC power battery charging cable with a 100 – 240V AC power source.



**WARNING: HAZARDOUS MOVING PARTS.** Do not place fingers, hair, clothes, lanyard... near moving parts.



**CHOKING HAZARD. SMALL PARTS.**  
Not for children under 3 years old.



**! WARNING**

**ELECTRIC SHOCK HAZARD.**

This equipment is to be serviced by trained personnel only.



**PROP 65 WARNING**

This product can expose you to chemicals including lead, which is known to the State of California to cause cancer, birth defects or other reproductive harm.

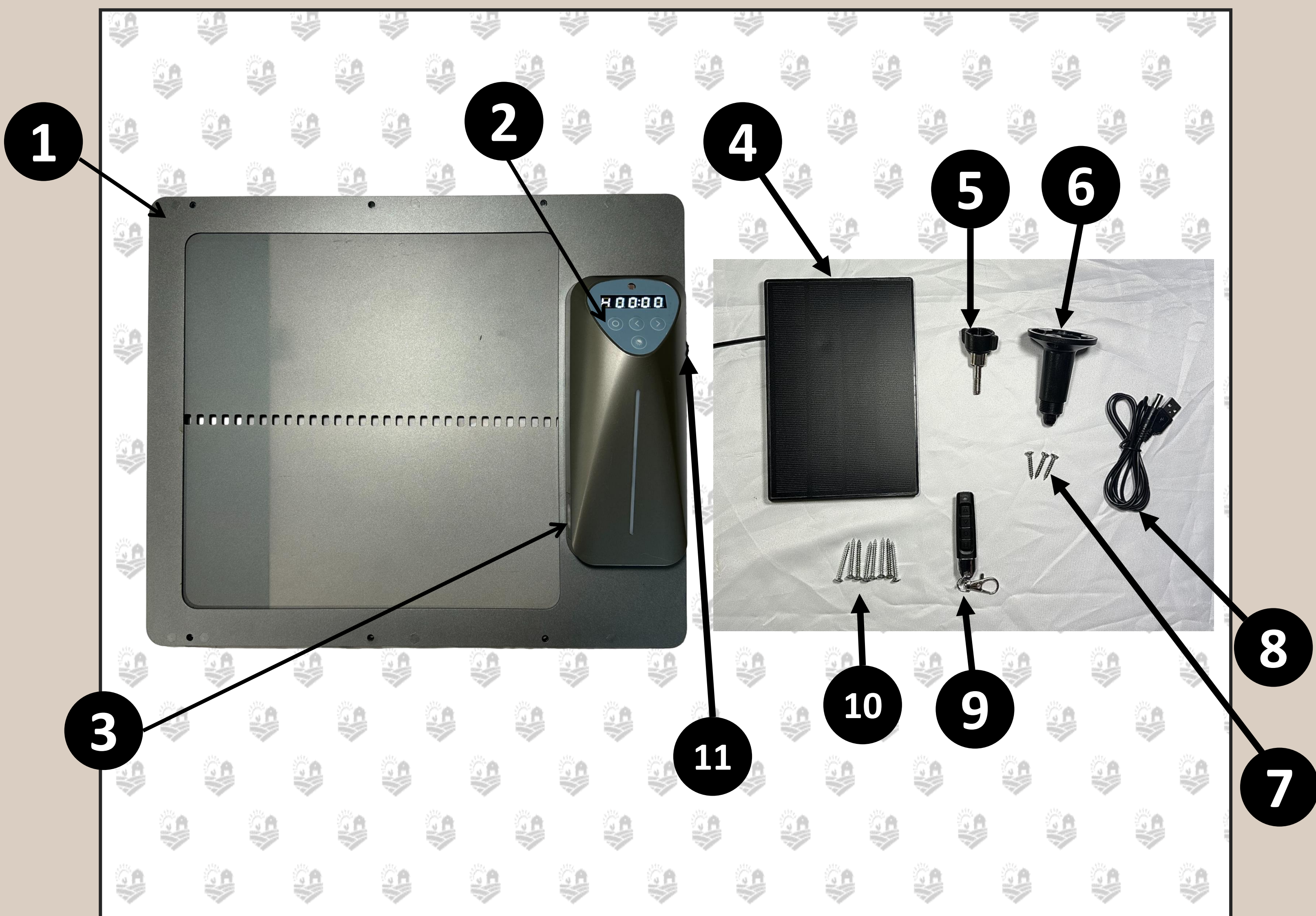
For more information, go to [www.P65Warnings.ca.gov](http://www.P65Warnings.ca.gov)



**DO NOT DISPOSE IN TRASH.** Follow appropriate local electronics scrap procedures.



# Product Introduction



1. Chicken Coop Door

2. Control Panel

3. Bird Motion Sensor

4. 3W Solar Panel

5. Solar Panel Mount Screw

6. Solar Panel Wall Mount

7. Solar Panel Wall Mount Screws

8. Automatic Chicken Door Internal Battery Charger

9. Automatic Chicken Door Remote Control

10. Automatic Chicken Door Mount Screws

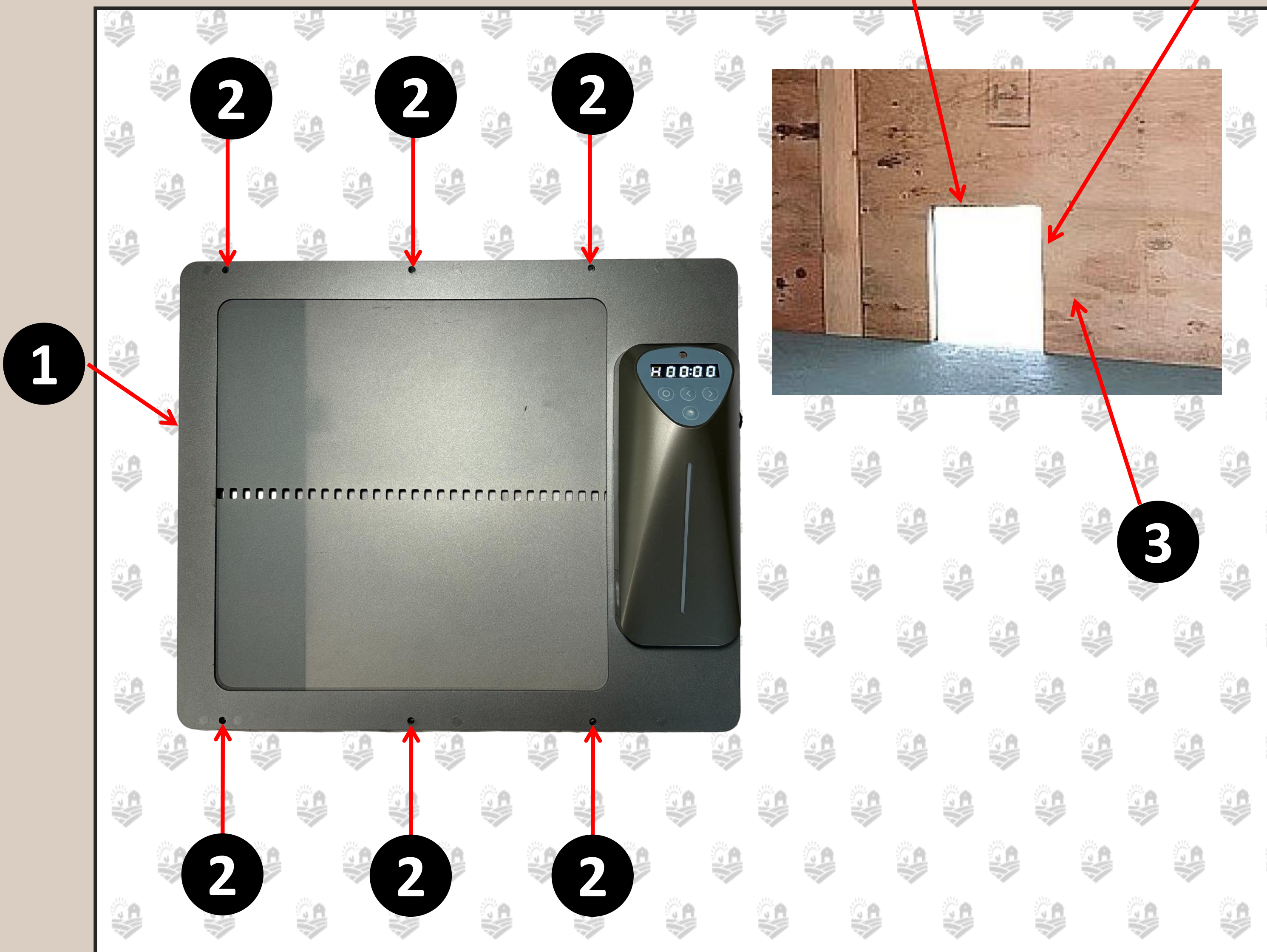
11. Battery Charge Port for Solar Panel or USB



# Installation Introduction

13" Inches in Width  
Approximately

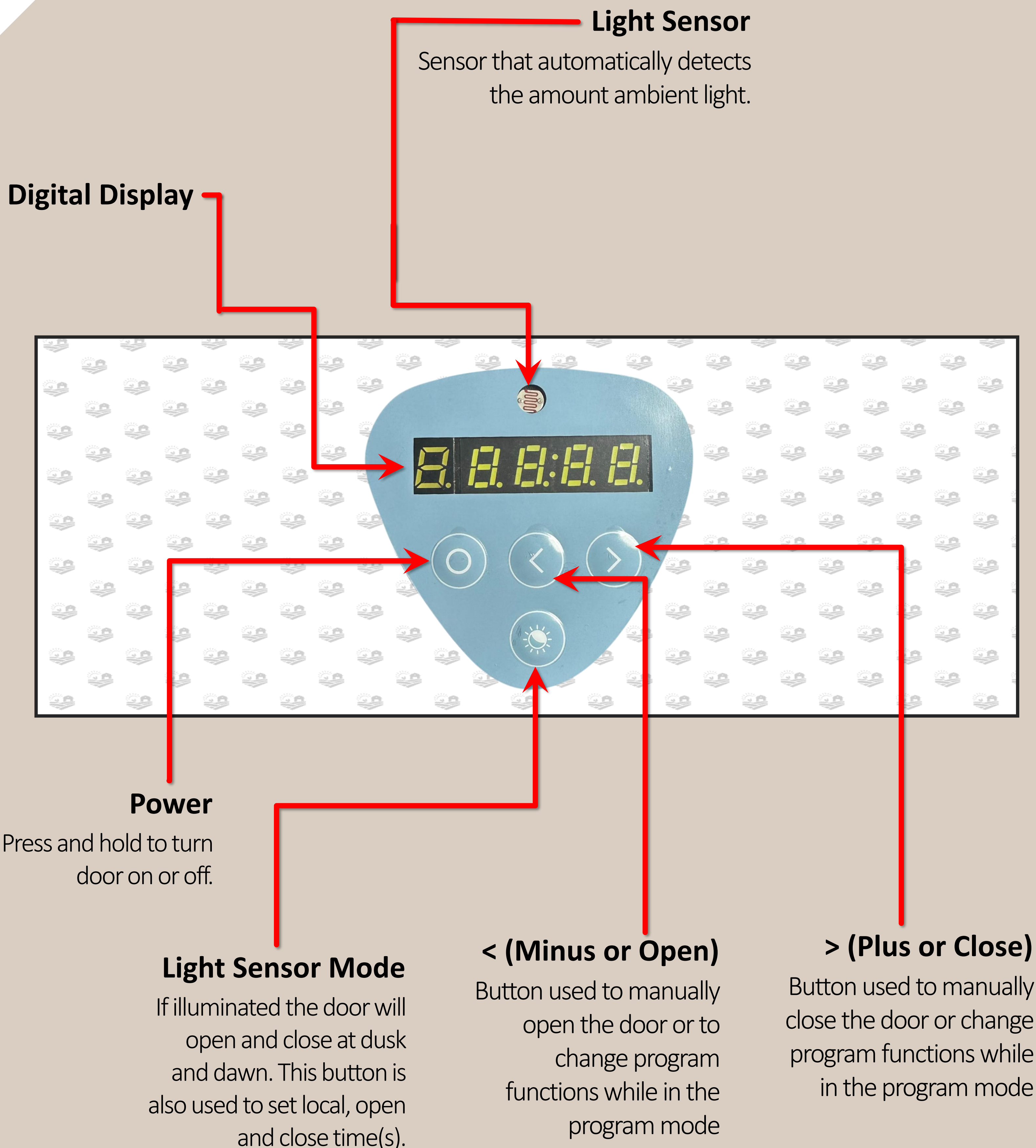
11" Inches in Height  
Approximately



1. Chicken Coop Door Frame
2. Screw Installation Location
3. Chicken Coop Structure/Wall (with hole for the Chicken Coop Door Frame Installation)



# Control Panel Introduction





# Specifications

- » **Unit Weight:** 4lbs
- » **Power Supply:** 3W Solar Panel, AC/DC Battery Charging Power USB Adapter (Input (100-240V 50/60hz)
- » **Internal Battery:** 5000 Milli-Amp Hour Lithium Battery
- » **Female Plug(Battery Charging Port):** DC (5.5x2.1mm) Plug (Hole Diameter: 5.5mm, Pin Diameter: 2.1mm, Length: 10mm)
- » **3W Solar Panel:** 3 Watts, DC (5.5x2.1mm) Male Plug (Outside Diameter: 5.5mm, Inside Diameter: 2.1mm, Length: 16ft)
- » **Wireless Remote Control:** Frequency 433 MHZ with a range of up to 25 meters
- » **Wireless Remote Control Battery:** A27 12V



# Operations Manual

## General Introduction

The FarmLite Automatic Chicken Coop Door is the perfect solution for a more enjoyable Homesteading way of life. We utilize modern technology and put that into a slim compact design to provide our customers with the best Automatic Chicken Coop Door available.

Our product is made to support your Homesteading goals and to help make homesteading easier.

## General Installation

1. Verify/create an opening in the chicken coop structure/wall such that the chicken coop door frame can be installed and securely fastened with screws. Width = 13" inches, Height = 11" inches
2. Attach the chicken coop door frame to the chicken coop structure/wall with the self-tapping screws(**DO NOT OVERTIGHTEN OR DOOR WILL COMPRESS AND NOT OPEN/CLOSE properly**). Ensure the chicken coop door frame is flat (no gaps/warps) against chicken coop structure/wall after the self-tapping screws are installed. Use a power tool to install screws through door.
3. Install the solar panel wall mount (3 smaller screws) within 15 feet of the door and in a spot where the solar panel will receive the best sunlight possible throughout the day.
4. Install the solar panel mount cap screw onto the mount. When the mount screw is tight the solar panel screw will no longer move. Loosen the solar panel mount cap screw to adjust the position of the solar panel screw. See next page for details.
5. Install the solar panel onto the mount screw.
6. Plug the solar panel cord into the battery charge port on the door.



# Operations Manual

## General Installation Continued



Figure 1: Solar Panel Mount Installed and Solar Panel Mount Cap Screw installed onto mount.

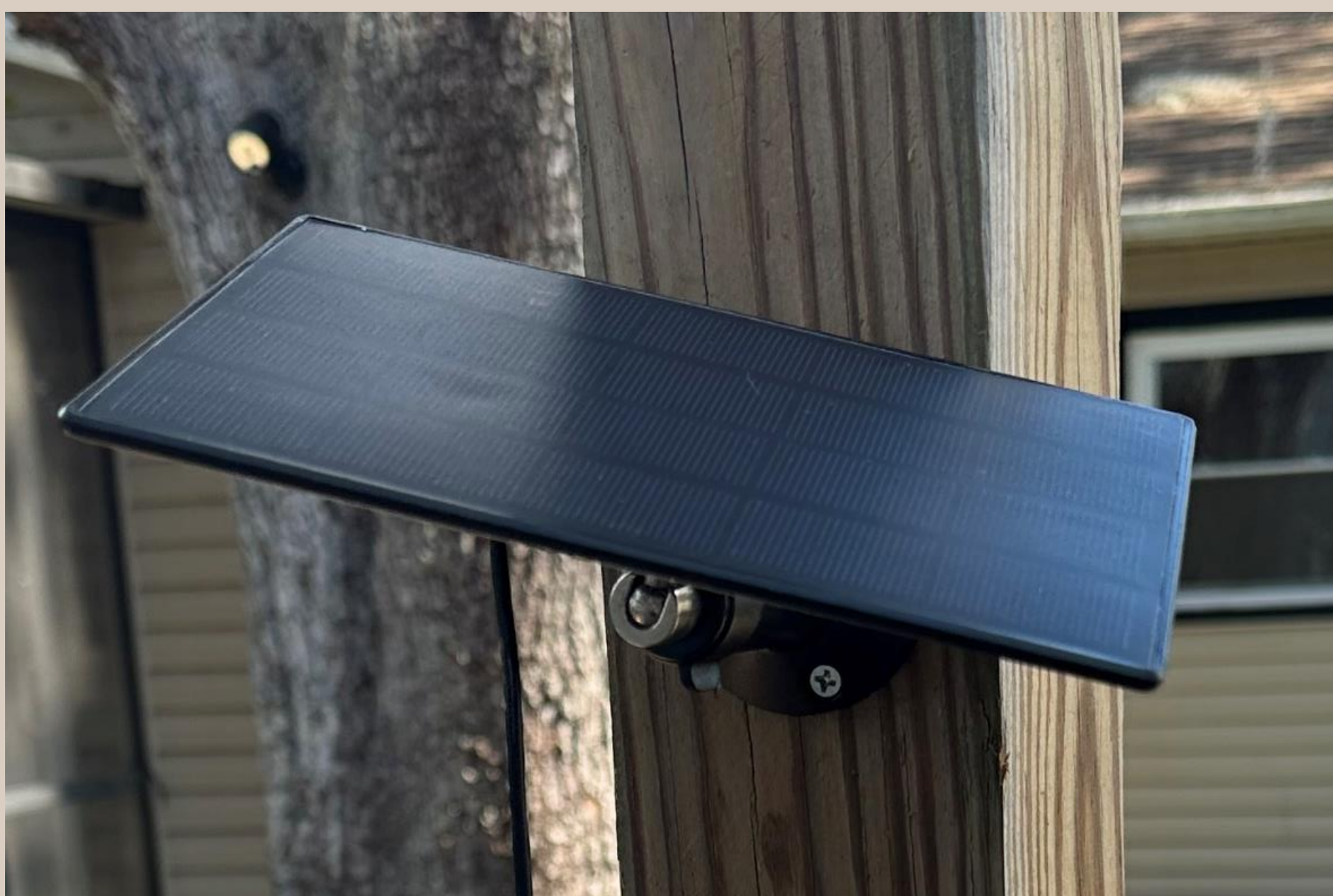


Figure 2: Solar Panel installed onto mount.



# Operations Manual

## Continued...

### 1.0 – Utilizing the Remote

1. Verify the remote control battery(s) are installed in the remote control(s) (**Battery(s): A27 12V**).
2. The remote is paired with the door by default.
3. The up button opens the door.
4. The Down button closes the door.
5. You can use the circle button to change the current time, timer open time and timer close time.
6. Since the door goes into a “sleep” mode a couple of minutes after opening/closing to conserve battery, if you want to open or close the door manually with the remote you must hold the Circle button for ~ 2 seconds to wake the door up first.





# Operations Manual

## Continued...

### 4.0 – Programming the Chicken Coop Door

Sequentially pushing the **SET** button on the control panel will cycle through the different settings to be programmed.

#### 1. Setting the Local Time (24 Hour Time Format) for the Door

1.1 Push the **Circle** button on the control panel.

1.2 The H will be flashing. Press the **Sun** button (square on remote).

1.3 The hours should be flashing. Use the < (left) or > (right) buttons on the control panel to change the hours to match your local time.  
(8AM=08:00, 8PM = 20:00)

1.4 Push the **circle** button again and the minutes should flash. Adjust the minutes time as required.

1.5 Push the **Sun** button to confirm the time.

#### 2. Setting Timer Open Time

2.1 Push the **Circle** button until the 0 is flashing on the left.

2.2 Push the **Sun** button, adjust the hours to whatever time you want the door to automatically open in the morning.

2.3 Push the **Circle** button again, adjust the minutes for the Timer Open time as required.

2.4 Push the **Sun** button to confirm the timer open time.

# Operations Manual

## Continued...

### 3. Setting Timer Close Time

3.1 Push the **Circle** button until the C is flashing on the left.

3.2 Push the **Sun** button, adjust the hours to whatever time you want the door to automatically Close in the afternoon/night.

3.3 Push the **Circle** button again, adjust the minutes for the Timer Close time as required.

3.4 Push the Sun button to confirm the timer close time.

### 4. Utilizing the Timer

4.1 If using the timer make sure that the Sun button is NOT illuminated.

### 5. Setting the Door to Open/Close by light

5.1 Simply push the Sun button so that the button is illuminated, simple as that!



# Maintenance & Troubleshooting

## Remote Control(s) Not Working

- » Check that the remote control battery(s) are installed in the correct direction and the battery(s) are full of charge. Replace batteries if required.
- » Ensure the remote is programmed to the Chicken Coop Door correctly.
- » Check that the Chicken Coop Door is powered on.

## Chicken Coop Door Does Not Power On

- » Hold the Circle button for a few seconds, if the time does not display then the door may be dead. Utilize the USB charge cable and attempt to charge the door for a few hours.
- » Contact us if your door is still inoperable.

## Chicken Coop Door Does Not Open and/or Close Automatically with the Local Time or Brightness Settings

- » Reach out to us and we'll walk you through some troubleshooting.



# Frequently Asked Questions (FAQ)

## **How do I reach out to FarmLite for Technical support?**

Go to our website [www.farmlite.store](http://www.farmlite.store) OR send us an email at [hello@farmlite.store](mailto:hello@farmlite.store) We are always available to help!

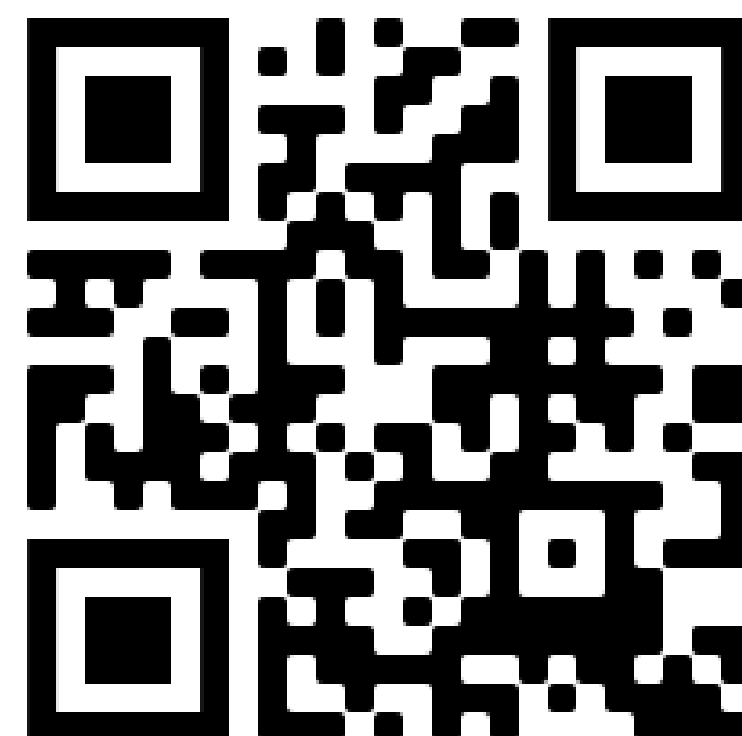
## **My unit is not working, what do I do?**

Check out the rest of this manual or send us an email at [hello@farmlite.store](mailto:hello@farmlite.store) We are always available to help!

## **Can I use the timer and the light sensor?**

No, only one function can be utilized so they don't contradict each other.

Questions? Scan me!





# Warranty

## Warranty Promise

The FarmLite Automatic Chicken Coop Door is backed by a 6 month warranty. Before processing a part replacement, we'll walk you through several troubleshooting steps, so be patient and allow us to properly diagnose the issue and path forward. Sign up for our warranty on [www.farmlite.store](http://www.farmlite.store)

After the 6 months we offer at our cost replacement of parts or depending on the situation we'll cover the cost ourselves.

## Void of Warranty

- » If there is any foreign object debris inside the machine or it looks like it's been tampered with the warranty will be voided.
- » If any internal parts have been replaced and/or messed with without contacting FarmLite customer support, warranty will be voided.